

# WESAL ELEBTKAR



## ENGINEERING CONSULTANCY

**Arch Design - Fire & Safety - Urban  
Planning - survey - studies - supervision**



## FIRST: INTRODUCTION ABOUT THE OFFICE

**ENGINEERING OFFICE NAME:** Wesal El Ebtkar Engineering  
Consultancy

**MAJOR:** Engineering Consultations and Engineering Safety  
Consultations

**Mailing address:** 7211 Al Ray, Al Ghadir, Riyadh 13311 - 3216

**INCORPORATION DATE:** 8/9/1431

**Commercial Register** **1010476969**

**MEMBERSHIP NO. IN THE SAUDI AUTHORITY FOR ENGINEERS** **5517**

**Membership No. for Safety and Fire protection activity:** 157

**Tel. No.** + 966 112631996

**Fax No.** +966 112759885

**EMAIL ADDRESS:** [info@wslengconsult.com](mailto:info@wslengconsult.com) - [info@weec.sa](mailto:info@weec.sa)

**WEBSITE:** <http://www.weec.sa>

**OFFICE OWNER MOBILE NO.** +966505604801

## SECOND: OFFICE FIELDS:

- Urban Planning and land division
- Categorization of the properties of all buildings.
- Construction and architectural design.
- Spatial planning and roads designs
- Studies (traffic, flash floods, and roads designs).
- Fire protection and safety systems.
- Supervise the performance of construction and finishing works.
- Supervise the networks works with all its types (water, drainage, floods, and electricity).
- Engineering Arbitrations.

### THREE GOVERNMENTAL AUTHORITIES WITH WHICH THE OFFICE DEALS

Authority	Field of qualification
Ministry of Municipal and Rural Affairs	Engineering consultations
Riyadh Development Authority	Urban Planning
Ministry of Housing	Categorization of property units - Sale according to map (Wafi) - Completion
Riyadh Municipality	Urban Planning and managing construction licenses
Riyadh Municipality	Fire protection and safety consultations.
Riyadh Municipality	Studying floods and roads
Civil Defense	Fire protection and safety consultations.
Saudi Council of Engineers	Engineering Consultations
Saudi Electricity Company	Engineering Consultations
Technical and Vocational Training Corporation	Engineering Consultations

<b>Ministry of Transportation</b>	<b>Roads, bridges and tunnels planning</b>
<b>Saudi Arabian Monetary Authority</b>	<b>Engineering consultations</b>
<b>Riyadh General Court (Experts Committee)</b>	<b>Engineering consultations and arbitration</b>
<b>National Water Company</b>	<b>Engineering consultations</b>
<b>Saudi Authority for industrial cities and technology areas.</b>	<b>Engineering consultations and safety systems</b>

## FOURTH: OFFICE TEAMWORK

The teamwork of office consists of elite of technical expert in the architectural and constructions engineering fields, planning, land parceling, spatial, and traffic works using the most recent and most recent technology.

<b>Name:</b>	<b>Position:</b>	<b>No. of Experience years:</b>
<b>Eng. / Ahmed Abdullah Al Masari</b>	Chairman of Board of Directors	28 year
<b>Eng. Mohammed AbdulKerim Al Mohamed</b>	Chief Executive Officer Consultant engineer	28 year
<b>Eng. Turkey Nasser Al Dossary</b>	Deputy Chief Executive Officer	4 year
<b>Eng. Ahmed Ibrahim Abd Rabu</b>	Projects Director	10 years
<b>Eng. Mohamed Ahmed Wanas</b>	Civil Engineer	10 years
<b>Eng. Al Said Abdul Rahman Al Said Abu Zaid</b>	Urban Planning Engineer	10 years
<b>Eng. Amr Muslim Khalil Aroug</b>	Architecture	6 years
<b>Eng. Mohamed Adel Awad.</b>	Electric Engineer	5 years
<b>Mr. Ahmed Mohamed Goda</b>	Contracts specialist	10 years
<b>Eng. Masaab Hassan Ali</b>	Spatial Engineer	7 years
<b>Eng. Ahmed Samer Ahmed Gharieb</b>	Safety Engineer	Two Years

## FIFTH: SOME OF THE OFFICE PROJECTS

The Office had performed within a short period many projects and made planning, architectural, spatial, traffic, hydraulic, safety and fire protection systems, surveying, engineering arbitration for example without limitation:

### 1) PROJECTS OF PLANNING STUDIES:

The office had prepared studies, planning designs to many lands in Riyadh City and outside thereof, for example:

- **The project of studying, designing and planning of land area of 8 million square meters:** The project is located in the center of Riyadh city in Al Rabwa, Al Saffa, Al Farouq) on a plot of land of which area is 8 million, six hundred square meters). The project is a residential and commercial scheme. The plan includes the main utilities such as mosques, educational and health services, green areas and gardens (the project approved by Riyadh Municipality and Ministry of Housing).



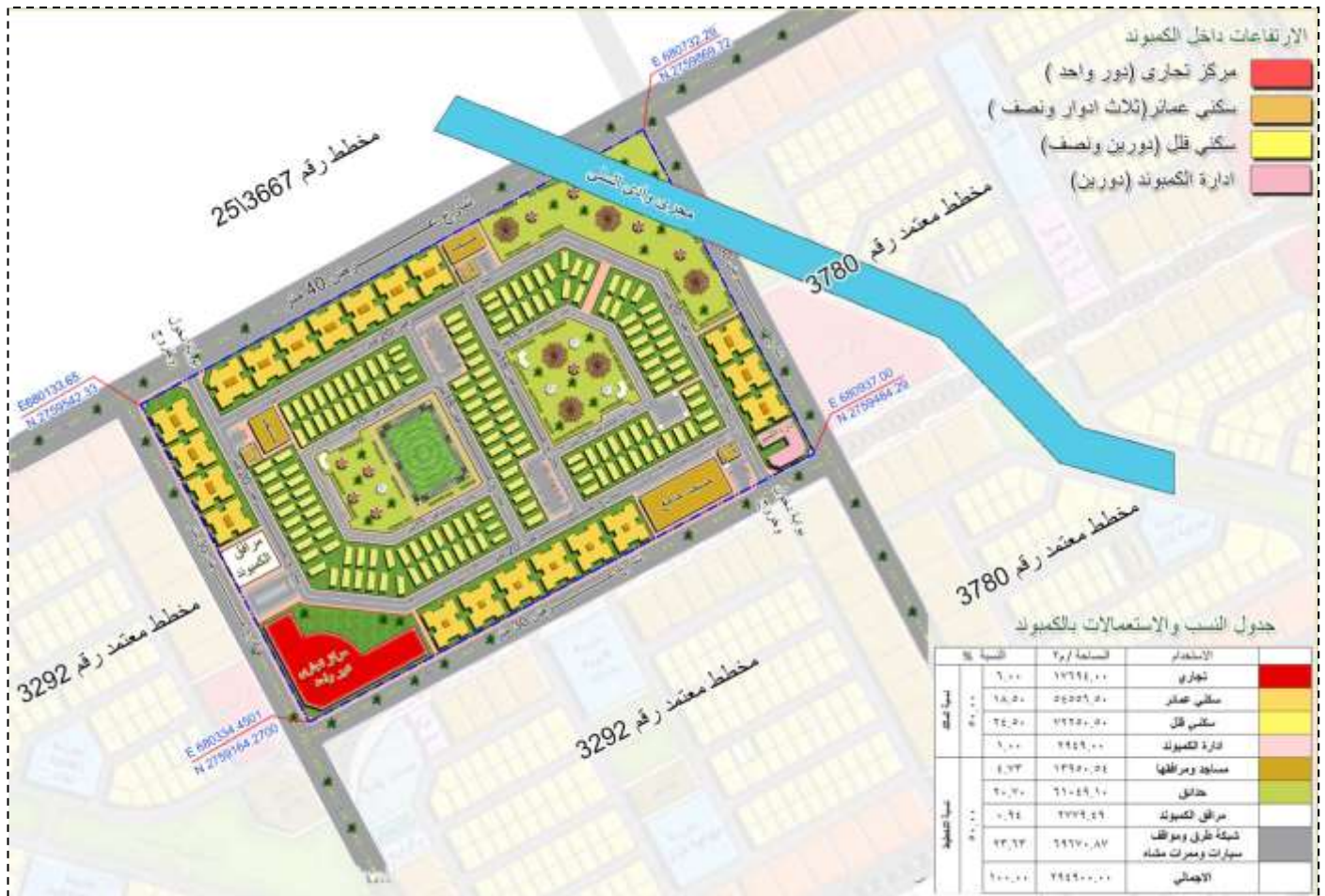
- Studying, designing and land planning projects (El Ruwaita and Hamad Company): The projects are located in Nargis District in Riyadh on a land of which area is 435 square meters. The project is a commercial and residential plan. The plan includes the main utilities such as mosques, educational and health services, green areas and gardens (the project approved by Riyadh Municipality).

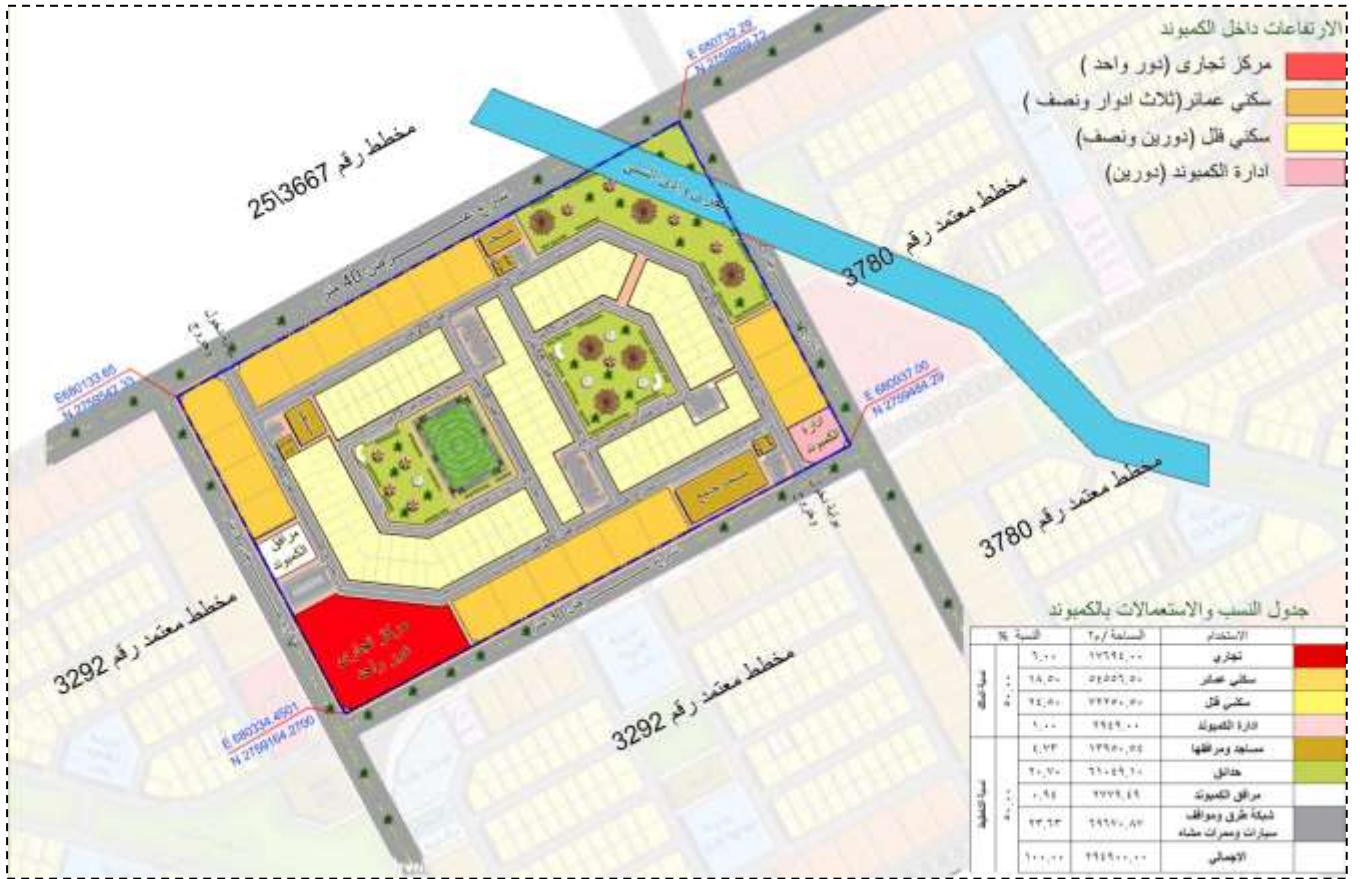




- Studying, designing and planning of closed compound Al Medimeg: Al Remal District project is located in Riyadh city on a piece of land of which area is 294900 square meters. The project is a closed compound composed of residential villas and residential apartments, trading mall and a building for project management. The compound includes main utilities such as green areas, parks, mosques and its main utilities thereto (the project is approved by the higher council for Riyadh Development Authority).

### The Approved Plan by the Higher Council for Riyadh Development - Urban Planning in Riyadh Municipality.



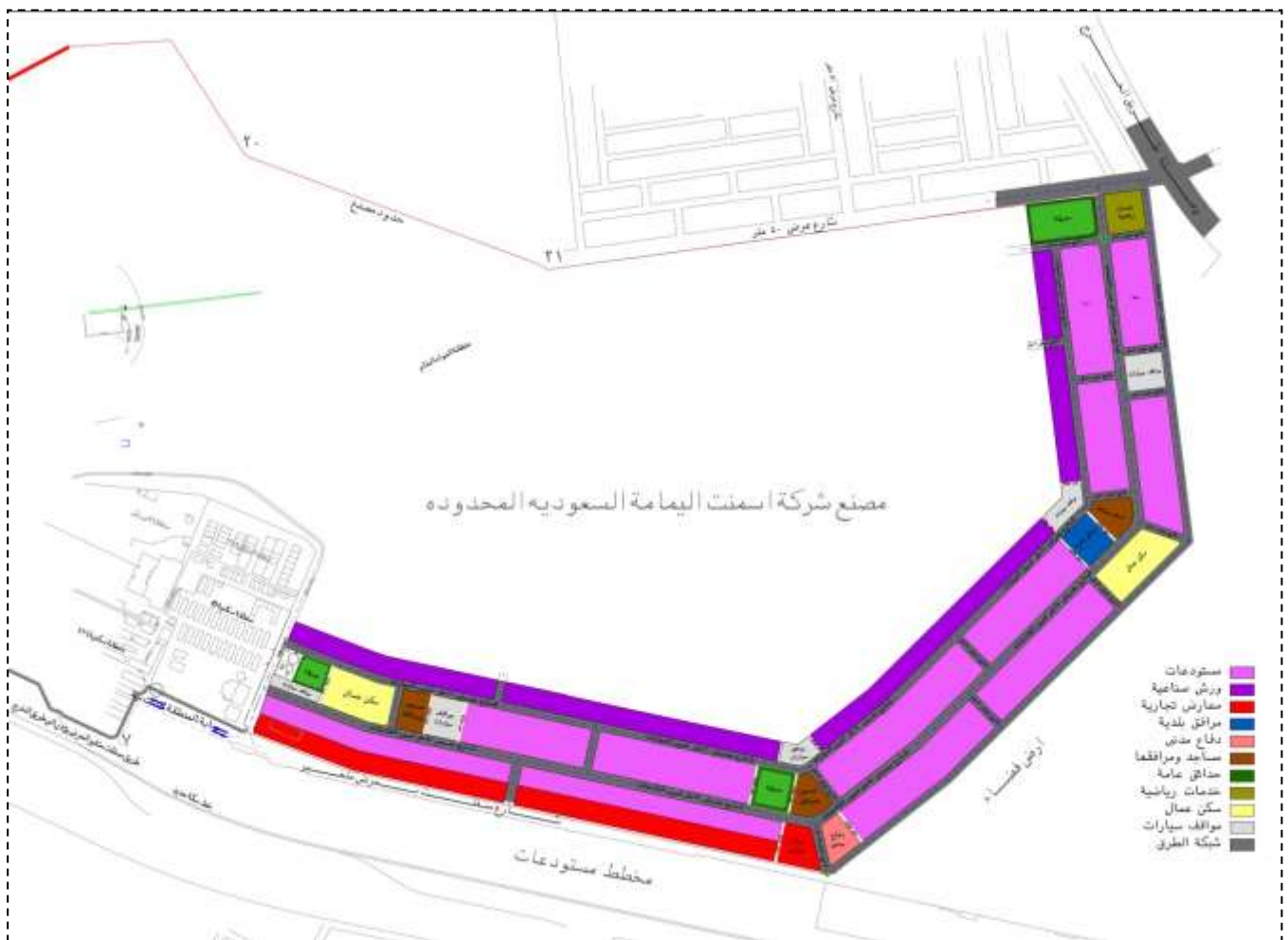


The project of studying, Designing and planning Fantasy Land: The project is located in Remal District in Riyadh city on a plot of land of which area is 276 thousand square meters. The project consists of a residential and commercial plan including the main utilities such as mosques, educational and health services, green areas and gardens (the project is approved by Riyadh Municipality).





The project of Studying, designing and planning the land of AL YAMAMAH CEMENT CO. LIMITED IN RIYADH: The project is located within the borders of Al Yamamah Cement Factory in Riyadh city of which area is 900 thousand square meters. The project is a plan including workshops, warehouses, and accommodation for employees. The plan includes main utilities such as mosques, sports services, civil defense, green areas and gardens (the project is approved by Riyadh Municipality).



- **Al Qadesiya Residential Plan Project:** Owned by Sarh Attaqnia Contracting Co. located in the Eastern District in Riyadh City on a plot of land of which area is 302782 square meters. The project is a residential plan approved by the Ministry of Housing, Developers Services Management (Completion). It took exceptions for heights. It made a partnership with the Ministry of Housing. It contains residential building of seven floors, Duplex villas, townhouses, and educational, religious and entertaining services.



- The project of studying, designing and planning Gymnasium center: This project is located in Remal District in Riyadh City on a plot of land of which areas is 55 thousand square meters. The project is an integrated gymnasium fitness center. It includes a building for center management, conventions hall, gymnasium, spa, swimming pool, sports courts, and walking paths, it includes main utilities such as mosque and services supplementary to the sports activity.



-The project of studying and designing the final planning for the land of Omran Mohamed Abdul Rahman Al Omran: The project is located in Remal District in Riyadh city on a plot of land of which area is 419489 thousand square meters. The project is a residential and commercial plan. The project also includes the main utilities such as mosques, green areas, educational and governmental services, (the project is approved by Riyadh Municipality).

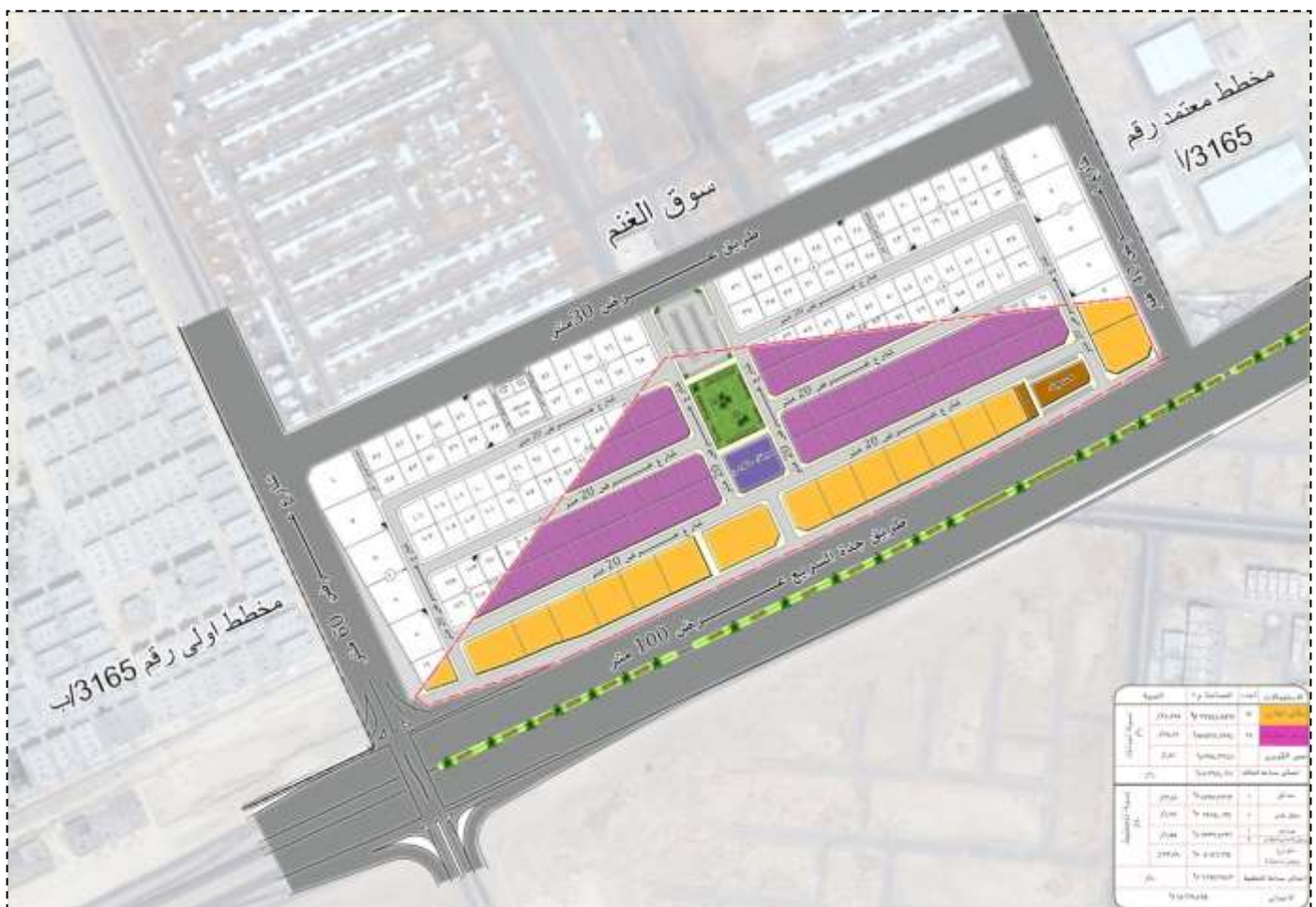
### The final division plan of the project





-The project of studying, designing and planning the land of Fahd Mohamed Bin Asaker and Saleh Mohamed Saad Al Aglan: The project is located in Twaiq district in Riyadh city on a land of which area is 150000 square meters. The project is a residential and commercial plan and industrial workshops. The final approval is obtained from the Urban Planning Department in Riyadh Municipality.

### Cars workshops plan in Twaiq District



## 2) ARCHITECTURAL DESIGNS PROJECTS FOR NEW AND EXISTING BUILDINGS:

The office had prepared studies, architectural and construction designs to many residential and commercial projects inside and outside Riyadh City and outside thereof, including for example:

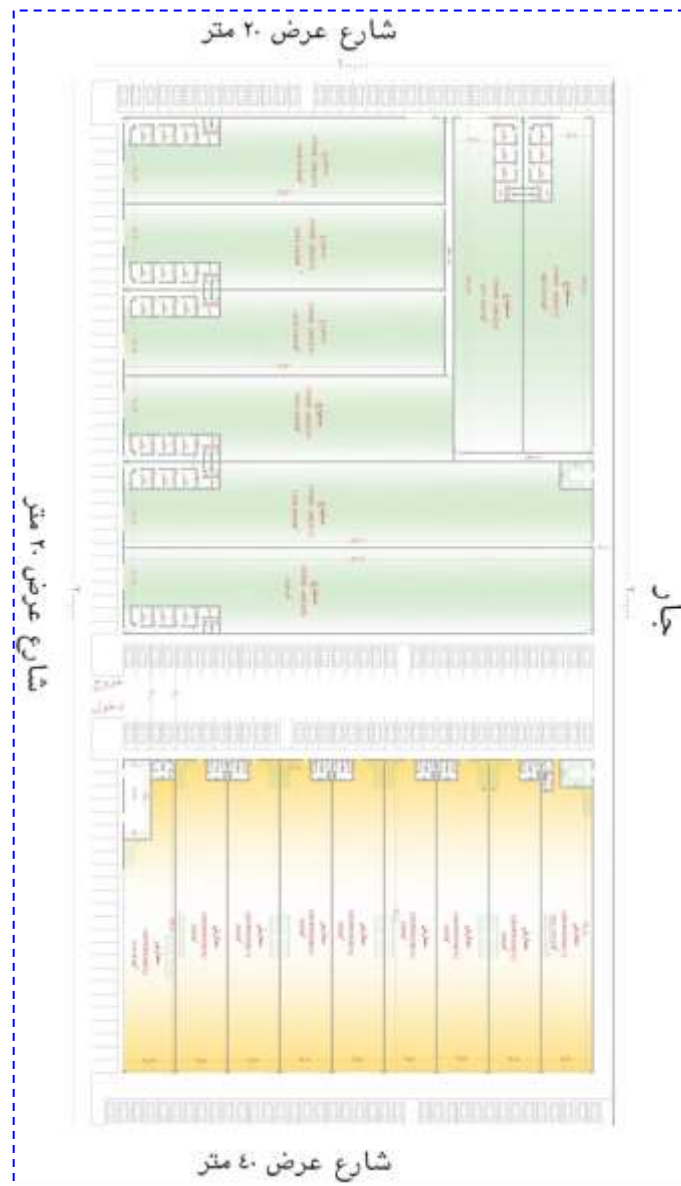
Studying, designing commercial exhibits and administrative offices for Ruwaite Company in Qairawan District in Riyadh City, of which area is 2400 square meters. It consists of commercial exhibits and administrative offices.



- Designing and approving the plans of the commercial building on 6000 square meters area in Remal Center. The building consists of commercial exhibits and Mezzanine owned by Prince Mete'b Abdul Aziz.

**(It is approved by Riyadh Municipality)**

- Designing and approving architectural plans commercial exhibits and warehouses for Mada Ceramics and Marble Company in Manakh district, Kharj Road on an area of 20000 square meters.

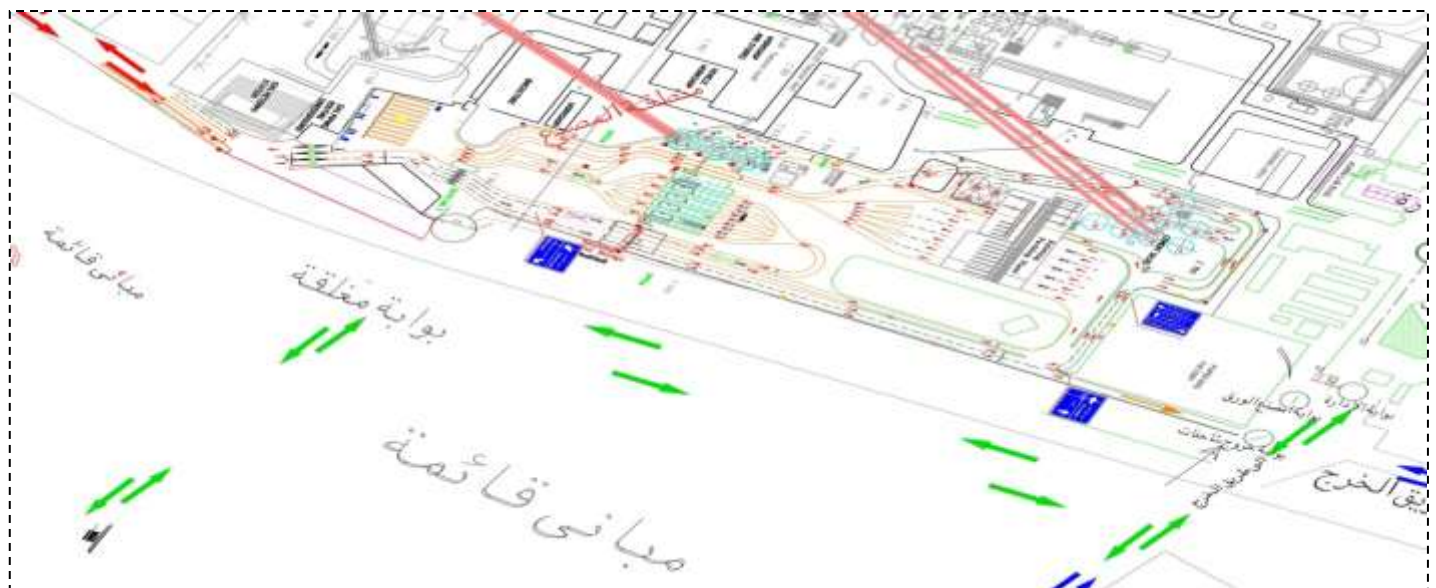
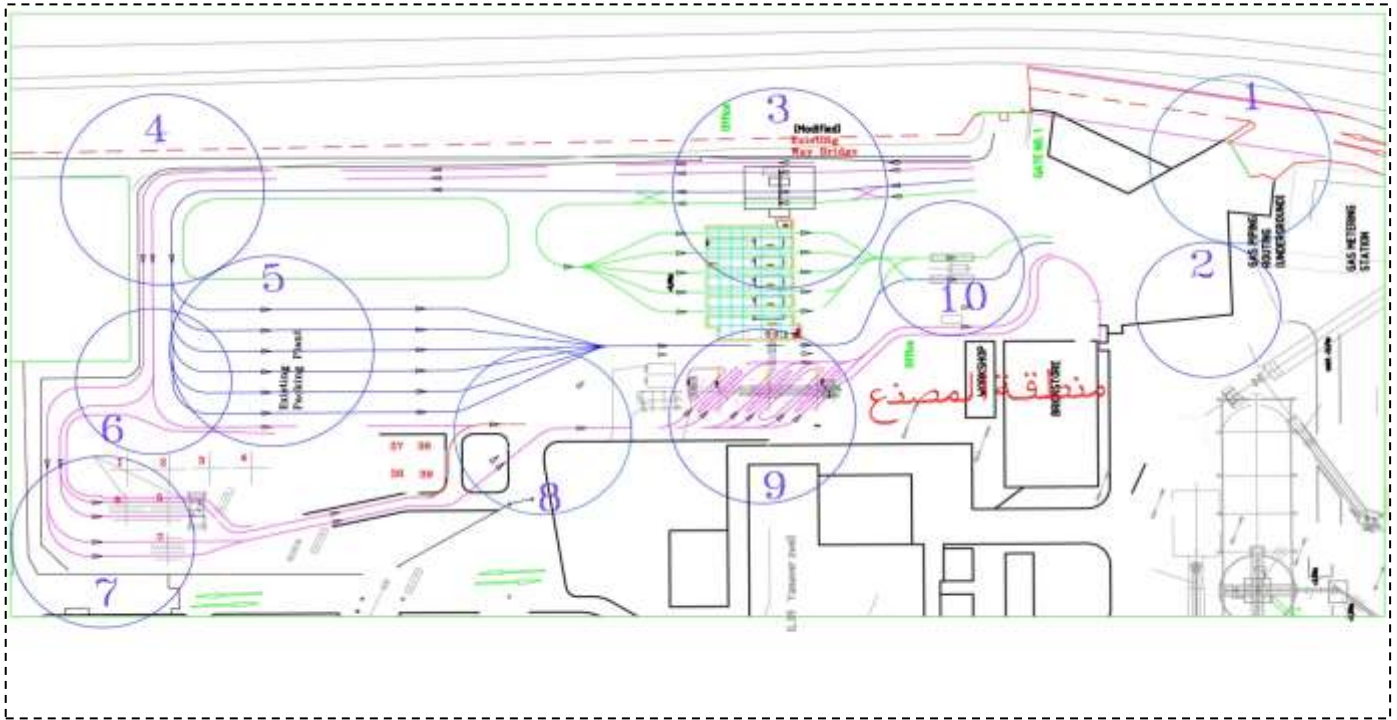


- Make as-built surveying, and approve the urban plans for Al Rossais Commercial Center existing in Dirab District, Batha Street on an area of 3800 square meters. This center consists of basement, ground floor, mezzanine, 11 upper floors. It consists of commercial shops administrative offices and residential units (Al Batha Municipality) owned by Mohamed Suleiman Al Rossais.
- Redesign and approve the architectural plans for a commercial-residential building in Merkb district on an area of 280 square meters built adjacently. It consists of a ground floor, commercial shops and five upper floors for residential apartments (Al Batha Municipality) owned by Mohamed Bin Suleiman Al Rossais.
- Perform as-built surveying and approve the architectural plans for Dirab Nights coffee shop in Dirab district, of which area is 10000 square meter, owned by Abdullah Bin Abdul Aziz Bin Ahmed Al Sediry (Licenses Department in Riyadh Municipality).
- Perform as-built surveying and approve the architectural plans for the Arabian coffee shop in Alarid District in the north of Riyadh City, King Fahd Road on an area of 3600 square meters, owned by Mohamed Bin Salman Bin Ali Al-Sheikh ( Licenses Department in Riyadh Municipality)
- Perform as-built surveying and approve the architectural plans for Saudi Public Transports (SAPTCO Public Transportation) in Dhabab St on an area of 2850 square meter, the building consists of administrative offices.
- Perform as-built surveying and approve the architectural plans for the building of AMAC Investments, owned by Abdul Aziz Mohamed Abdul Aziz Al Mashaal, in Al Murooj District of administrative office on an area of 1100 square meters ( Licenses Department in Riyadh City)
- Perform as-built surveying and approve the architectural plans for the Al Rajhi Hotel Al Batha, owned by Abdulla Bin Abdul Aziz Saleh Al Rajhi on an area of 1700 square meters (Licenses Department in Riyadh Municipality).
- Perform as-built surveying, design and approve the architectural plans for Military Clothing Factory in Al Kharj City affiliated to the Public Authority for Military Fittings.

- Perform as-built surveying, design and approve the architectural plans for El Sewedy Electric warehouses in Al Kharj Road, owned by Hesham Bin Hilal Al Sewedy on an area of 20000 square meters (Licenses Department in Riyadh City).
- Perform as-built surveying, design and approve the architectural plans for Al Kattan for beddings in Al Sulay District on an area of 3500 square meters ( Licenses Department in Riyadh City)
- Perform as-built surveying, design and approve the architectural plans for the Saudi House for Clothing owned by Saudi House Trading and Contracting Co. in Olaya District.
- Perform as-built surveying, design and approve the architectural plans for Saudi House for Clothes warehouses in Sulay District on an area of 3500 square meters.

### 3) PROJECTS OF TRAFFIC STUDIES:

The project of the traffic study for Al Yamamah Cement Factory in Riyadh.



#### 4) PROJECTS OF HYDRAULIC STUDIES:

The office had prepared many hydraulic studies for many projects in Riyadh City and outside thereof, for example:

- \_ Performing hydraulic study for a plot of land in Nargis district, Riyadh city, of which area is 435 thousand square meters, where a valley passes through the middle of the land. Although there are two bridges in the project, which were handled by modern technology in accordance with the standards of Riyadh Municipality (this study was approved by studies and designs of Riyadh Municipality).
- \_ Performing hydraulic study for a plot of land in Remal district in Riyadh city, of which area is 294900 square meters. Where the project passes from the highest point of the path of Wadi Al Sulay, the path and drainage were handled in accordance with the standards of Riyadh Municipality (this study was approved by studies and design Department of Riyadh Municipality).
- \_ The hydraulic study was made on a plot of land in Namar District in Riyadh City, of which area is 737865 square meters, owned by Abdul Rahman Mohamed Abdul Rahman Al Asaker (this study is approved by Studies and Designs Department in Riyadh Municipality)
- \_ The hydraulic study was made to a plot of land in Cordoba District in Riyadh City, of which area is 130386 square meters, owned by Abdul Rahman Al Mousa.
- \_ The hydraulic study was made to a plot of land in Uraija District in Riyadh City, of which area is 60000 square meters, owned by Adeem Investments Holdings Company.

## 5) SPATIAL AND TOPOGRAPHY WORKS PROJECT:

- \_ The office had made many survey works and studies the levels and topography work for many projects inside and outside Riyadh. In addition, performing the survey works for the as-built existing works and draw architectural designs thereto, including without limitation:
  - \_ Performing surveys and study topography works for a plot of land in Nargis District in Riyadh City, of which area is 435 thousand square meters.

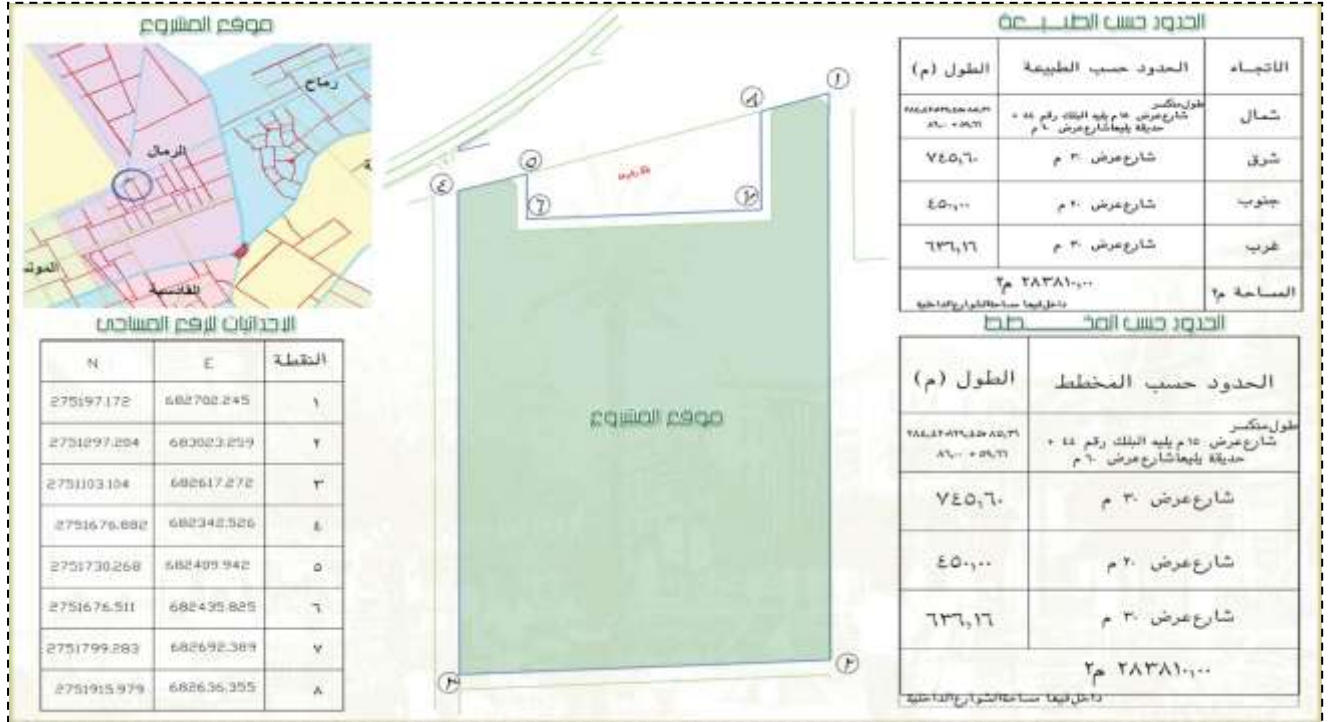




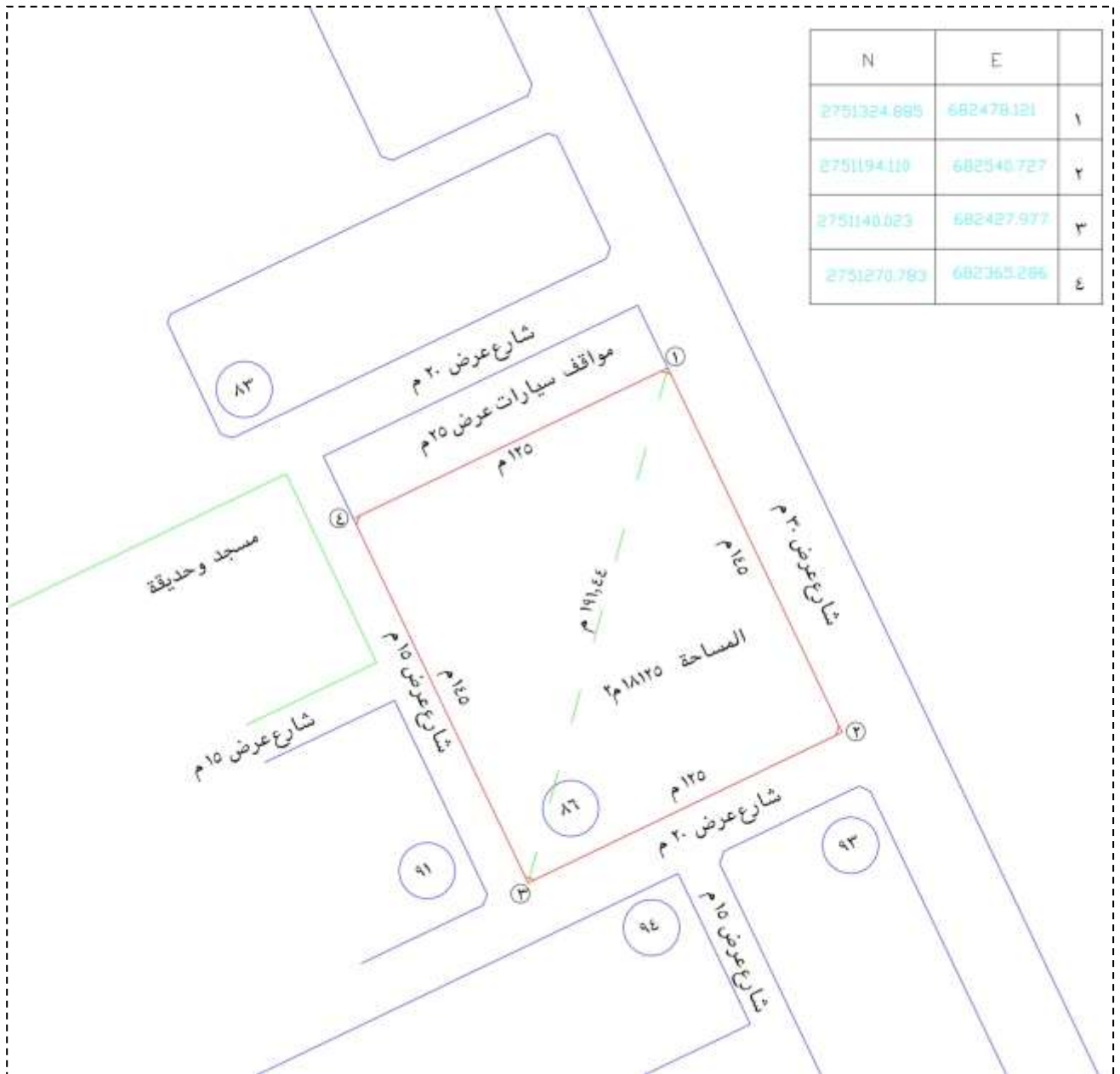
– Performing surveys and study topography works for a plot of land in Remal District in Riyadh City, of which area is 294900 square meters.



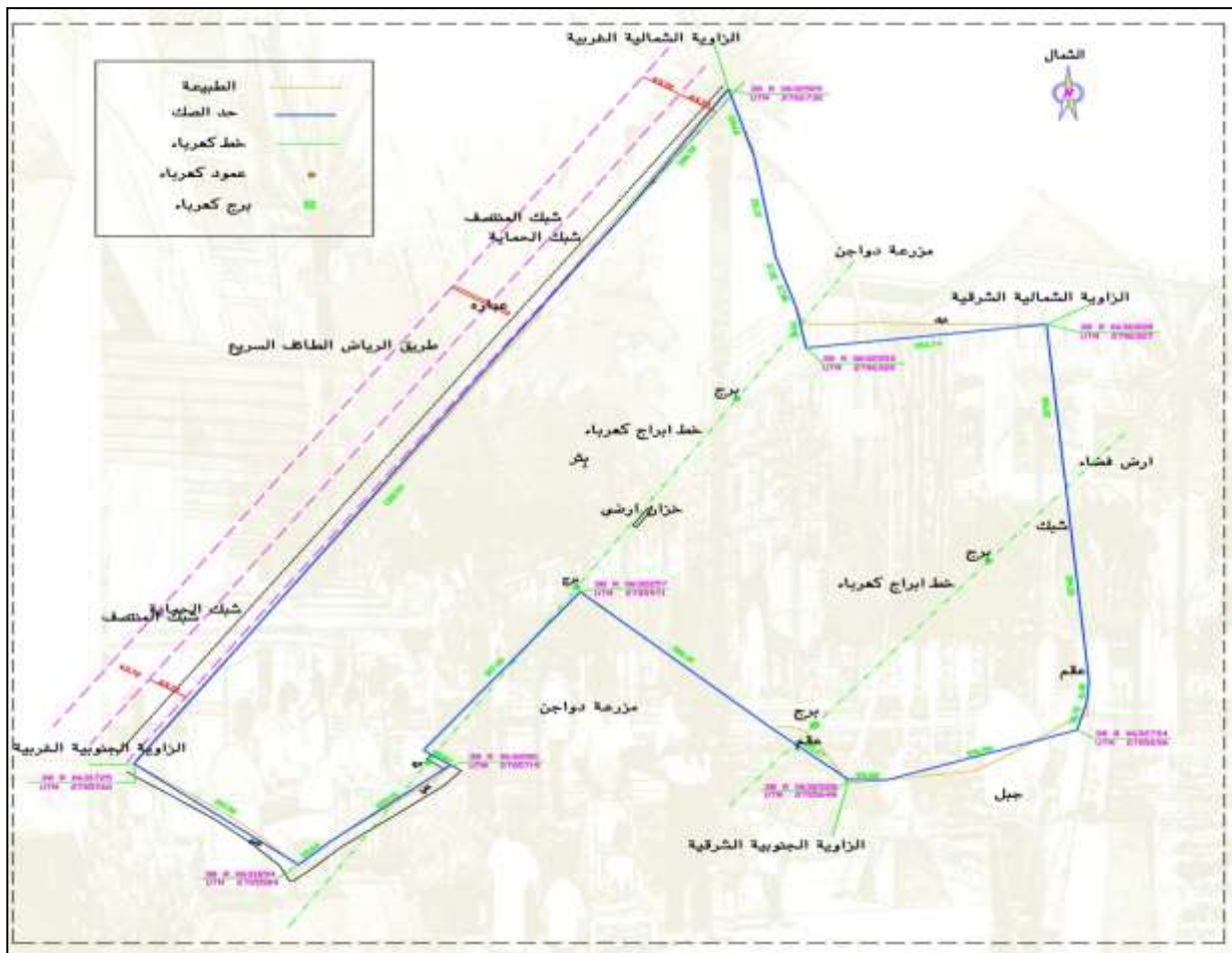
– Performing surveys and study topography works for a plot of Fantasy Land in Remal District in Riyadh City, of which area is 283810 square meters.



– Performing surveys and study topography works for a plot of land in Remal District in Riyadh City, of which area is 18125 thousand square meters.



– Performing surveys and study topography works for a plot of land in Al-Muzahmiyya, of which area is 594992 thousand square meters.



- Perform as-built surveying for Al Rossais Commercial Center existing in Dirab District, Batha Street on an area of 3800 square meters. This center consists of basement, ground floor, mezzanine, 11 upper floors. It consists of commercial shops administrative offices and residential units (Al Batha Municipality) owned by Mohamed Suleiman Al Rossais.
- Perform as-built survey and draw schemes for a commercial-residential building in Merkb district on an area of 280 square meters built adjacently. It consists of a ground floor, commercial shops and five upper floors for residential apartments (Al Batha Municipality) owned by Mohamed Bin Suleiman Al Rossais.
- Perform as-built surveying and draw the schemes for Dirab Nights coffee shop in Dirab district, of which area is 10000 square meters owned by Abdullah Bin Abdul Aziz Bin Ahmed Al Sediry
- Perform as-built surveying and draw the schemes for the Arabian coffee shop in Alarid District in the north of Riyadh City, King Fahd Road on an area of 3600 square meters, owned by Mohamed Bin Salman Bin Ali Al-Sheikh
- Perform as-built surveying and draw the schemes for Saudi Public Transports (SAPTCO public transportation) in Dhabab St on an area of 2850 square meter, the building consists of administrative offices.
- Perform as-built surveying and draw the schemes for AMAC Investments Company, owned by Abdul Aziz Mohamed Abdul Aziz Al Mashaal, in Al Murooj District of administrative office on an area of 1100 square meters ( Licenses Department in Riyadh City)
- Perform as-built surveying and draw the schemes for Al Rajhi Hotel in Batha

- Owned by Abdullah Bin Abdul Aziz Saleh Al Rajhi on an area of 1700 square meters.
- Perform as-built surveying, draw the schemes for Military Clothing Factory in Al Kharj City affiliated to the Public Authority for Military Fittings.
- Perform as-built surveying and draw the schemes for El Sewedy Electric warehouses in Al Kharj Road, owned by Hesham Bin Hilal Al Sewedy on an area of 20000 square meters.
- Perform as-built surveying and draw the schemes for Al Kattan for beddings in Al Sulay District on an area of 3500 square meters.
- Perform as-built surveying and draw the schemes for the Saudi House for Clothing owned by Saudi House Trading and Contracting Co. in Olaya District.
- Perform as-built surveying and draw the schemes for the Saudi House for Clothing warehouses in Sulay District on an area of 3500 square meters.
- Perform as-built surveying and draw the schemes for Prince Mete' b Abdul Al Aziz Woods warehouses in the industrial district on a plot of land 3000 square meters.
- Perform as-built surveying and draw the schemes for the Management Building of Al Hosn Ghazi Shaker in Sahafa District. It contains four floors, ground floor and 11 upper floors on an area of 1200 square meters.
- Perform as-built surveying and draw the schemes for the warehouses of Al Hosn Ghazi Shaker in Sulay District on an area of 23000 square meters, including warehouses, offices, and residence for employees.
- Perform as-built surveying and draw the schemes for Sultana mall in Al badiaah District owned by Princess Hoda Abdullah Mohamed Al-Sheikh on an area of 65 thousand square meters.

– Perform as-built surveying and draw the schemes for the Saudi Industrial Development Fund.

It contains one basement, ground floor, and ten upper floors.

**The main building of Al Hosn Ghazi Shaker Company.**



Sultana Mall in Al badiaah District





Al Rossais Commercial Building in Batha



**SAPTCO Building for public transportation in Dhabab Street.**



### Al Rajhi Hotel in Batha



## 6) ENGINEERING ARBITRATIONS AND PROCESSING ENGINEERING REPORTS:

– Many engineering reports were made for the Public Court in Riyadh, Experts Committee for many different projects, estimate and acknowledge the damages in some buildings according to the directives of the court

## **(7) PROTECTION AND SAFETY SYSTEMS PROJECTS IN THE OFFICE:**

- Plans of safety and firefighting were approved for Al Amal Complex for mental health, in Al Khuzama district, Princess Sara Bent Al-Imam Abdullah St. (the owner, Ministry of Health in Kingdom of Saudi Arabia).
- Designed and approved safety and firefighting systems plan to a gas station in Hawṭah Sudayr in Riyadh.
- Designed and Approved plans for safety and firefighting systems for a commercial-residential building (furnished apartments) Uraija District in Riyadh.
- Designed and approved plans for safety and firefighting systems for a commercial-residential building in Hittin District in Riyadh.
- Designed and approved plans for safety and firefighting systems for Al Maraai Company in Riyadh.
- Approved safety and firefighting plans for Office-Commercial building for United Electronics Company (Extra in Riyadh)

- \_ Designed and approved safety and firefighting systems for Al Othman Tower, 17 floors in Sahafa District, composed of hotel apartments.
- \_ Designed and approved plans for safety and firefighting systems in Romance Hotel in Aqiq District, King Fahd Road.
- \_ Designed and approved safety and firefighting systems for Military Clothing Factory in Al Kharj City.
- \_ Designed and approved safety plans for larger projects:
  - Al Rossais Commercial Building in Batha
  - Mortgage Finance Fund building
  - Saudi Industrial Development Fund building
  - General Authority for Statistics building

Supervise, test and operate safety and firefighting systems Elegance tower (commercial offices)

Test and operate safety and firefighting systems for the building of the Public pension agency \_ former leading company and now it is known as Reza Co.



دار الرياض  
DAR AL RIYADH  
للمستشارات الهندسية  
مشروع الدعم الفني  
لتطبيق السلامة والوقاية  
من الحريق للمنشآت 1429 هـ.



أمانة منطقة الرياض  
الإدارة العامة للتخطيط العمراني  
إدارة فحص البناء



مديرية الدفاع المدني  
بمدينة الرياض  
إدارة السلامة

## التقرير الفني ونتائج التدقيق لمخططات السلامة والوقاية من الحريق

رقم الإصدار: ٢

تاريخ الإصدار:	١٤٢٩ / ١٢ / ٢٥ هـ	الموافق:	٢٠١٨ / ٩ / ٥ م
رقم المعاملة:	٣٩٠٠١٢٢٧١٦	نوع المشروع:	صندوق للتنمية الصناعية السعودي
اسم المالك:	المؤسسة العامة للتقاعد		
المكتب الاستشاري:	وحل لمستشارات السلامة الهندسية		
نتيجة التدقيق:	مطابق ويعتمد		

### مندوب الدفاع المدني

بمنطقة الرياض

رائد مهندس / محمد فوزان الشيباني



### رئيس القسم الفني بقسم السلامة

بأمانة منطقة الرياض



تم تدقيق أنظمة الوقاية من الحريق طبقاً لما أن نظامية المبنى وساحبة المواقع المبنية والمواقف على إقامة النشاط في هذا المبنى أو على هذا الموقع وكل ما يتعلق بالملكية الخاصة والأمانة بربح الرجوع في ذلك كله لأمانة منطقة الرياض والجهة الفرعية والجهات ذات العلاقة.

## التقرير الفني ونتائج التدقيق لمخططات السلامة والوقاية من الحريق

رقم الإصدار: 1

تاريخ الإصدار:	١٤٤٠ / ٥ / ١ هـ	الموافق:	٢٠١٩ / ١ / ١ م
رقم المعاملة:	٤٠٠٠٨٣٢٩٧	نوع المشروع:	مبنى صندوق التنمية العقاري السعودي
اسم المالك:	المؤسسة العامة للتقاعد		
المكتب الاستشاري:	وصل لاستشارات السلامة الهندسية		
نتيجة التدقيق:	مطابق ويعتمد		

### مندوب الدفاع المدني

بمنطقة الرياض

رائد مهندس / محمد فرزان الشيباني



### رئيس القسم الفني بقسم السلامة

بأمانة منطقة الرياض



تم تدقيق أنظمة الوقاية من الحريق فقط علماً أن نظامية المبنى وصلاحيته الموقع للبناء والموافقة على إقامة النشاط في هذا المبنى أو على هذا الموقع وكل ما يتعلق بالمانئكية الخاصة والعامة يجب الرجوع في ذلك كله لإمانة منطقة الرياض والبلدية الفرعية والجهات ذات العلاقة.



## التقرير الفني ونتائج التدقيق لمخططات السلامة والوقاية من الحريق

رقم الإصدار : (١)

تاريخ الإصدار : ١٤٣٥ / ٠٩ / ١٨ هـ الموافق : ٢٠١٤ / ٠٧ / ١٥ م

رقم المعاملة : ١٣٤٢٠ نوع المشروع : عمارة تجارية مكتبية

اسم المالك : داوود السبيتي - المستأجر / الشركة المتحدة للإلكترونيات (اكسترا)

المكتب الاستشاري : وصل لاستشارات نظم السلامة الهندسية

نتيجة التدقيق : مطابق ويعتمد

مندوب الدفاع المدني  
بمنطقة الرياض

رئيس القسم الفني بقسم السلامة بأمانة  
منطقة الرياض

المدقق : محمد بن مناهي الدعجاني



مذكرة إقرار بالموافقة  
على مخططات السلامة  
للمنشآت التجارية  
مشروع تدقيق شروط الأمن والسلامة  
والوقاية من الحريق الواجب توفرها  
في جميع المنشآت. وتعدّ القرار مع  
أمانة منطقة الرياض بقرار رقم ٧٧  
تاريخ ١٤٣٥/٠٩/١٨ هـ



التاريخ : ١٤٣٥ / ٠٩ / ١٨ هـ

## التقرير الفني ونتائج التدقيق لمخططات السلامة والوقاية من الحريق

رقم الإصدار: 1

تاريخ الإصدار:	1439 / 7 / 19 هـ	الموافق:	2018 / 11 / 05 م
رقم المعاملة:	28029	نوع المشروع:	بنية فرع بنك
اسم المالك:	شركة الراجحي المصرفية للاستثمار		
المكتب الاستشاري:	وهل للاستشارات السلامة الهندسية		
نتيجة التدقيق:	مطابق ويعتمد		

### مندوب الدفاع المدني

بمنطقة الرياض

رالد مهدي / محمود فرزان الشيباني



### رئيس القسم الفني بقسم السلامة

بأمانة منطقة الرياض



تم تدقيق أنظمة الوقاية من الحريق مطبق على أن نظامية المبنى وعلاوية الموقع للبناء والموافقة على إقامة النشاط في هذا المبنى أو على هذا الموقع وكل ما يتعلق بالملكية الخاصة والمساحة يجب الرجوع في ذلك كله لهيئة منطقة الرياض والبلدية الفرعية والجهات ذات العلاقة.

## التقرير الفني ونتائج التدقيق لمخططات السلامة والوقاية من الحريق

رقم الإصدار: 1

تاريخ الإصدار:	1439 / 8 / 6 هـ	الموافق:	2018 / 1 / 22 م
رقم المعاملة:	39031099	نوع المشروع:	روضة أطفال
اسم المالك:	شركة محمد عبدالعزيز الرادحي وأولاده للاستثمار		
المكتب الاستشاري:	وصل لاستشارات السلامة الهندسية		
نتيجة التدقيق:	مطابق ويعتمد		

### مندوب الدفاع المدني

بمنطقة الرياض

رائد مهندس / محمد غرزان السبياني



### رئيس القسم الفني بقسم السلامة

بأمانة منطقة الرياض

دار الرياض  
DAR AL RIYADH  
للاستشارات الهندسية

مشروع تدقيق شروط الأمن والسلامة  
والحماية من الحريق الواجب توفرها في  
مبنى المنشآت بغلق الحرم مع أمانة  
منطقة الرياض - رقم العقد 979  
يؤكد المستطاب لتتالية وثائق استشارات  
الدفاع المدني ويشتمل المكتب المعتمد  
مستأجرة صحة للأمانة العامة  
تحت إشراف مدير استشارات

1439/8/6 هـ

تم تدقيق أنظمة الوقاية من الحريق فقط علماً بأن نظامية المبنى وصحة الموقع للبناء والموافقته على إقامة النشاط في هذا المبنى أو على هذا الموقع وإل ما يتعلق بالملكية الخاصة والعامة يجب الرجوع في ذلك كله لأمانة منطقة الرياض والسليمة الفرعية والجهات ذات العلاقة.



مشروع الدعم الفني  
لتدقيق السلامة والوقاية  
من الحريق للمنشآت 1429 هـ



أمانة منطقة الرياض  
الإدارة العامة للتخطيط العمراني  
إدارة فحص البناء



مديرية الدفاع المدني  
بمدينة الرياض  
إدارة السلامة

## التقرير الفني ونتائج التدقيق لمخططات السلامة والوقاية من الحريق

رقم الإصدار: ٢

تاريخ الإصدار:	١٣ / ٩ / ١٤٣٩ هـ	الموافق:	٢٨ / ٥ / ٢٠١٨ م
رقم المعاملة:	٣٩٠٠٣٩٤...	نوع المشروع:	منتج ترفيهي بالدرعية
اسم المالك:	هشام بن صالح المرشد		
المكتب الاستشاري:	وصل لاستشارات السلامة الهندسية		
نتيجة التدقيق:	مطابق ويعتمد		

### مندوب الدفاع المدني

بمنطقة الرياض

رائد مهندس / محمد فززان الشيباني



### رئيس القسم الفني بقسم السلامة

بأمانة منطقة الرياض

بأمانة منطقة الرياض  
دار الرياض  
DAR AL RIYADH  
للاستشارات الهندسية  
مشروع تطبيق شروط الأمن والسلامة  
والحمية من الحريق الواجب توفرها في  
جميع المنشآت ولقعد الرسم مع نسخة  
منطقة الرياض - رقم العقد: ١٧٦  
يعتمد المخطط للتطبيق وفقاً لمتطلبات  
الدفاع المدني ويتحمل المكتب المصمم  
مسئولية صحة التصميم المقدمة.  
خبر القسم الفني عدداً معرفه

تاريخ: ١٣ / ٩ / ١٤٣٩ هـ

تم تدقيق أنظمة الوقاية من الحريق فقط علماً أن نظامية المنسـ وصلاحيـة الموقع للبناء، والموافقة على إقامة النشاط في هذا المبنى أو على هذا الموقع وكل ما يتعلق بالملكية الخاصة والعامة يجب الرجوع في ذلك كله لإمارة منطقة الرياض والبلدية الفرعية والجهات ذات العلاقة.

## التقرير الفني ونتائج التدقيق لمخططات السلامة والوقاية من الحريق

رقم الإصدار: ٤

تاريخ الإصدار:	١٤٣٩/١٢/١٩ هـ	الموافق:	٢٠١٨/٠٨/٢٠ م
رقم المعاملة:	٣٨...٧.٧٦١	نوع المشروع:	مجمع سكني تجاري اداري
اسم المالك:	محمد بن سلمان الرصيص و مضاوي بنت سلمان الرصيص		
المكتب الاستشاري:	وصل للاستشارات الهندسية		
نتيجة التدقيق:	مطابق ويعتمد		

### مندوب الدفاع المدني

بمنطقة الرياض

رائد مهندس / محمد فوزان الشيباني



### رئيس القسم الفني بقسم السلامة

بأمانة منطقة الرياض



التاريخ: ١٤٣٩/١٢/١٩ هـ

تم تدقيق أنظمة الوقاية من الحريق فقط، علماً أن نظامية المبنى وصالحية الموقع للبناء والموافقة على اقامة النشاط في هذا المبنى أو على هذا الموقع وكل ما يتعلق بالملكية الخاصة والعمامة يجب الرجوع في ذلك كله لأمانة منطقة الرياض والبلدية المرعية والجهات ذات العلاقة.

## التقرير الفني ونتائج التدقيق لمخططات السلامة والوقاية من الحريق

رقم الإصدار : (٢)

تاريخ الإصدار : ١٤٣٧ / ١٠ / ٢٣ هـ الموافق : ٢٠١٦ / ٠٧ / ٢٨ م

رقم المعاملة : ١٢٥٦٣٨ نوع المشروع : شقق فندقية ٤ نجوم

اسم المالك : عبدالرحمن بن عبدالعزيز بن محمد العثمان

المكتب الاستشاري : وصل لاستشارات السلامة الهندسية

نتيجة التدقيق : مطابق ويعتمد

مندوب الدفاع المدني  
بمنطقة الرياض

رائد مهندس : محمد بن منجلي الدعجاني



رئيس القسم الفني بقطاع السلامة وإمارة

دار المنطقة الرياض  
DAR AL RIYADH

للاستشارات الهندسية

مشروع تطبيق شروط الأمن  
والسلامة والوقاية من الحريق الواجب  
توفرها في جميع المنشآت بتعدد الطرم  
مع إمارة منطقة الرياض

رقم العقد : ١٧٩ - عام ١٤٣٧ هـ

تاريخ الإصدار : ١٤٣٧ / ١٠ / ٢٣ هـ

تم تطبيق القواعد الوقائية من الحريق فقط علما ان تنظيمية المبني وصلاحيه الموقع للبناء والموافقة  
على اقامة النشاط في هذا المبني او على هذا الموقع وكل ما يتعلق بالملكيه الخاصه والعامه  
يجب الرجوع في ذلك كله لإمارة منطقة الرياض و البلدية الفرعية والجهات ذات العلاقة.

## التقرير الفني ونتائج التدقيق لمخططات السلامة والوقاية من الحريق

رقم الإصدار : (١)

٢٠١٢ / ١٢ / ١٢ م

الموافق :

١٤٣٤ / ٠١ / ٢٨ هـ

تاريخ الإصدار :

عمارة تجارية مكتفية

نوع المشروع :

١٠٧٢

رقم المعاملة :

خلف بن علي بن رويضان الرويضان

اسم المسالك :

وصل لاستشارات نظم السلامة الهندسية

المكتب الاستشاري :

مطابق ويعتمد

نتيجة التدقيق :

مدير إدارة السلامة بالدفاع المدني  
بمنطقة الرياض

رئيس القسم الفني بقسم السلامة بأمانة  
منطقة الرياض

عقيد : عبد بن عبد الله العصيمي




دار الرياض  
DAR AL RIVADH  
للاستشارات الهندسية  
مشروع دعم الفني لتدقيق  
مخططات الأمن والسلامة ضد  
الحريق مع أمانة منطقة الرياض  
رقم العقد ١٠٥١ - رقم العقد ١٠٥١ هـ  
رئيس القسم الفني

## SEVENTH: OFFICE SERVICES

- Prepare studies, schematic designs, land parceling and road designing

- Prepare and approve studies of architectural designs for the new and existing building.

- Categorizing all property units and approve thereof (Ministry of Housing)

- Prepare and approve the traffic and hydraulic studies (floods).

- Prepare surveys, spatial report, and topographies.

- Preparing safety systems and firefighting designs and studies.

- Communicate and deal with the municipalities and Riyadh Municipality, Riyadh development city and Ministry of Housing

- Preparing engineering reports to the Public Court of Riyadh



## EIGHTH THE APPROVED AUTHORITIES THEREBY



شركة المياه الوطنية  
National Water Company



فَرز الوحدات العقارية  
Subdivision





شركة الاستثمارات الرائدة  
Raidah Investment Company

